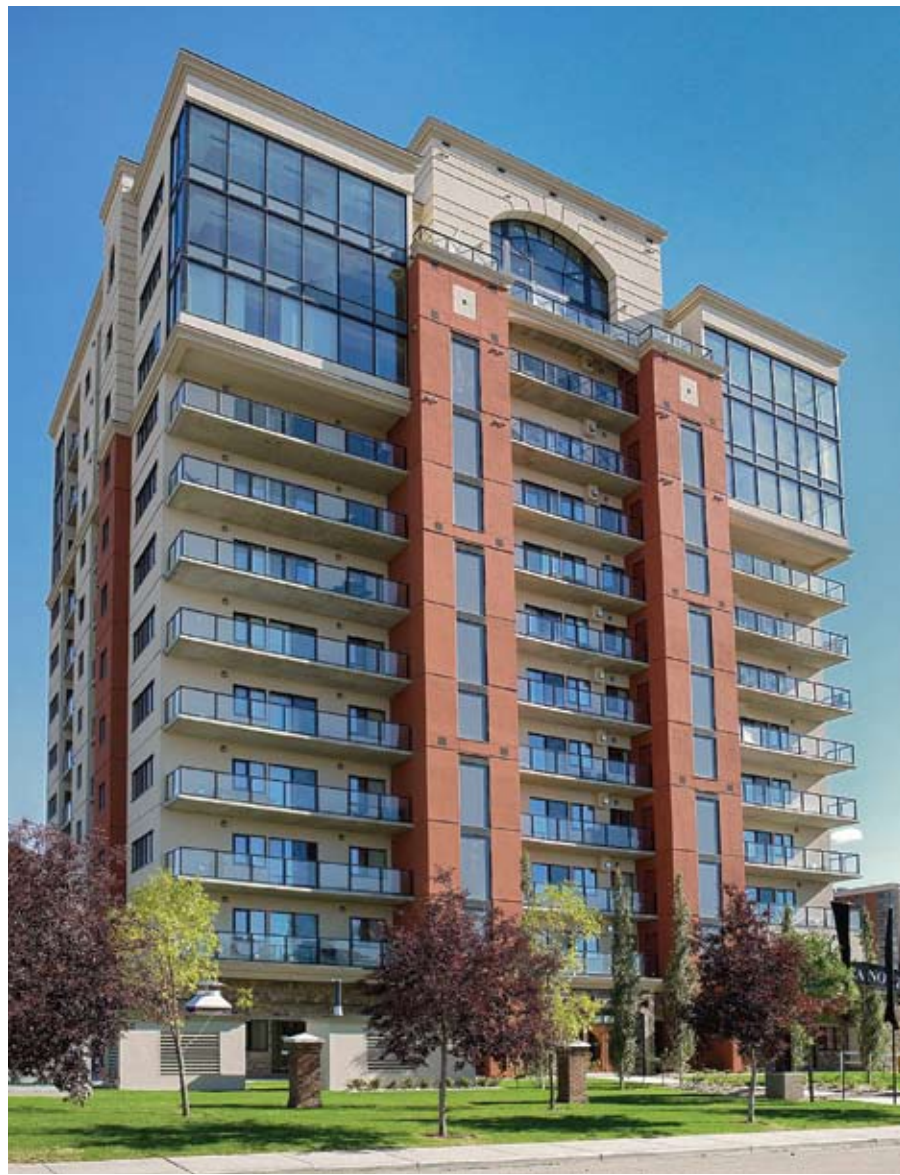


Railtown's Alta Vista South
premium downtown living

The high life



Story by Ann Sutherland

All aboard for a ride into one of downtown Edmonton's most innovative condo developments. Alta Vista South, a 12-storey, 122-suite condo building, is part of Christenson Developments' Railtown community. Located along 111 Street between 103 and 102 Avenues, Railtown was developed and constructed by Christenson with a bold vision in mind — to create a sustainable urban village. Alta Vista South is the final part of this phase and, according to sales manager Valerie Downing, it is 80 per cent sold out and immediate occupancy is available. "This is your last chance to get in on a brand new condo at Alta Vista and to be part of Railtown," she says.

Most of the remaining suites are on the higher floors, and no matter which direction your suite faces, you have wonderful views of the city and a sunny, bright home. Various sized show suites are open for viewing and showcase the many features and modern amenities Alta Vista has to offer.

Remaining suites are approximately between 1,000 and 1,200 square-feet and are one-bedroom plus den, two-bedroom, and two-bedroom plus den. Downing says



As Seen in
Edmonton Home
& Condo Living
Magazine

EDMONTON
HOME & CONDO LIVING

...no matter which direction your suite faces, you have wonderful views of the city and a sunny, bright home.

these condos are very competitively priced. "Suites start at \$389,000 and go up to \$509,000," she says. "Condo fees, and that includes heat, water, gas, maintenance, and reserve fund, are on average between \$360 and \$400."

Christenson doesn't skimp when it comes finishes. Contemporary design and décor is found throughout each suite starting in the kitchen where you'll find granite countertops, undermount sink, under cabinet lighting and ceramic tile backsplash. Stainless steel appliances in the kitchen and a front load washer and dryer in the in-suite laundry are included in the price. Hardwood flooring stained in the latest contemporary colours is found in the main living area. The bathroom has ceramic tile flooring and boasts a six-foot extra deep soaker tub. >>



Christenson Developments brings its forward-thinking vision to Alta Vista South at Railtown for premium high-rise living within a sustainable downtown location.



Hardwood flooring stained in the latest contemporary colours is found in the main living area. The bathroom has ceramic tile flooring and boasts a six-foot extra deep soaker tub.

Other features include gas outlets on balconies for barbecues, air conditioning, secure underground heated parking, and Solar Shield windows for the ultimate in temperature control. The building itself is solid concrete construction and there are several amenity rooms for owner’s use. Make use of the exercise room or socialize with other residents in the event room which can also be



booked for private functions. “We also have a guest suite for your out-of-town visitors,” says Downing. “It’s like a hotel room, so your guests will feel quite special.”

Downing says Alta Vista South seems to be attracting a younger crowd, people who work downtown or who like the atmosphere of Railtown and like the price. “We’re also seeing a large number of owners who are multi-home owners,” notes Downing. “They may own a condo in another city and one here at Alta Vista. Plus, people moving from Toronto or Vancouver have their sights set on Alta Vista, again because of the location and the price.”

Looking down from the ninth floor show suite, you can see the appeal of the community. There is a lot of green space, walking and biking paths and a nice mix of multi-family housing. Built with the urban concept in mind, Railtown also has a shopping area that includes restaurants, shops and supermarket. Grant MacEwan University is nearby and the downtown core is within walking distance or easily accessible by transit.

Winner of numerous awards, Christenson Developments brings its forward-thinking vision to Alta Vista South at Railtown for premium high-rise living within a sustainable downtown location. Once you are on board, you won’t want to get off. ■

Fast Facts

- Community: Railtown
- Project: Alta Vista South
- Developer: Christenson Developers
- Style: Apartment-style condominiums
- Size: Start at 985 square-feet
- Price: Start at \$389,000
- Address: 10303-111 Street
- Hours: 1-6 p.m. Monday to Thursday; 1-5 pm weekends and holidays
- Web: www.thealtavista.ca