

The MANOR at ROYAL OAK Phase - 2

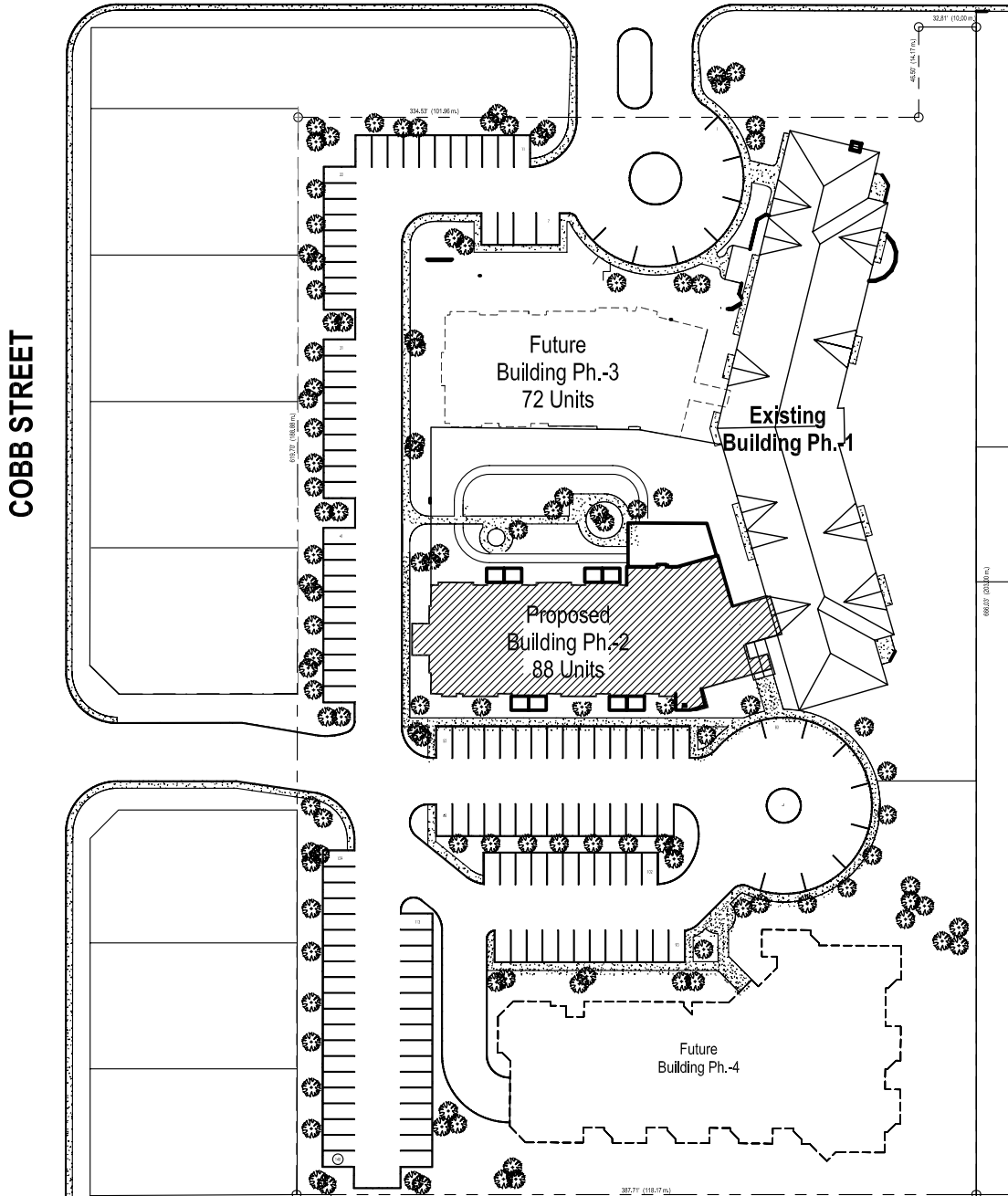


CHRISTENSON
DEVELOPMENTS

May 10, 2011

The MANOR at ROYAL OAK Phase - 2

COLLEGE AVENUE



Site Plan
NOT TO SCALE

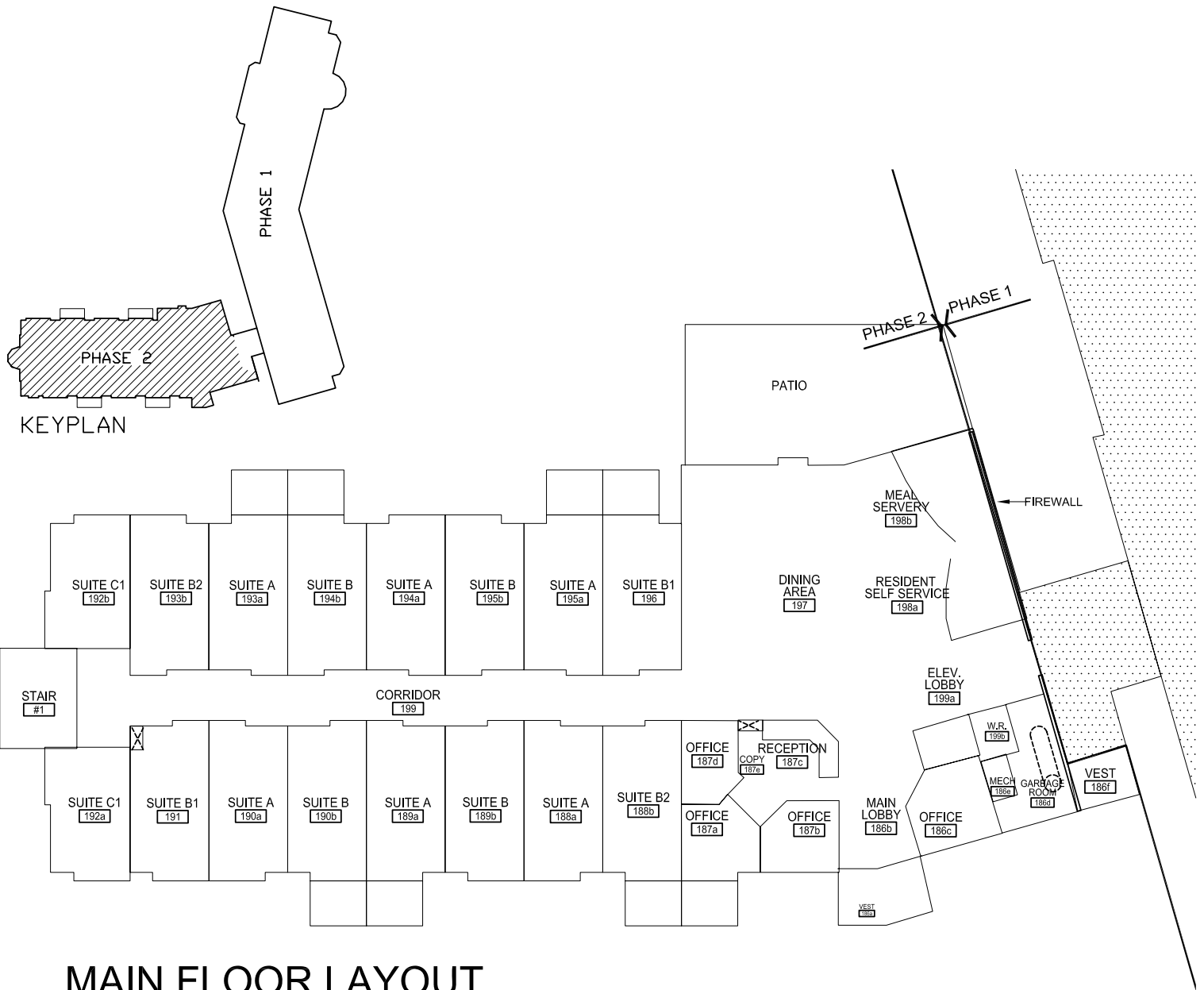
TO ACCOMMODATE YOUR HEATING AND VENTILATION SYSTEMS SOME VERTICAL SHAFTS AND SOME DROPPED CEILINGS MAY BE NECESSARY TO YOUR UNIT

DUE TO CHANGES AND IMPROVEMENTS RESULTING FROM CONTINUING RESEARCH AND DEVELOPING PROGRAMS, THE DEVELOPER/BUILDER RESERVES THE RIGHT TO ALTER THE DESIGN AND SPECIFICATIONS WITHOUT NOTICE OR OBLIGATIONS. ALL ILLUSTRATIONS ARE ARTIST'S CONCEPTS ONLY

SQUARE FOOTAGE SHOWN ON THE MARKETING PLANS REFLECTS THE APPLICABLE STRUCTURAL COMPONENTS.



The MANOR at ROYAL OAK Phase - 2



MAIN FLOOR LAYOUT

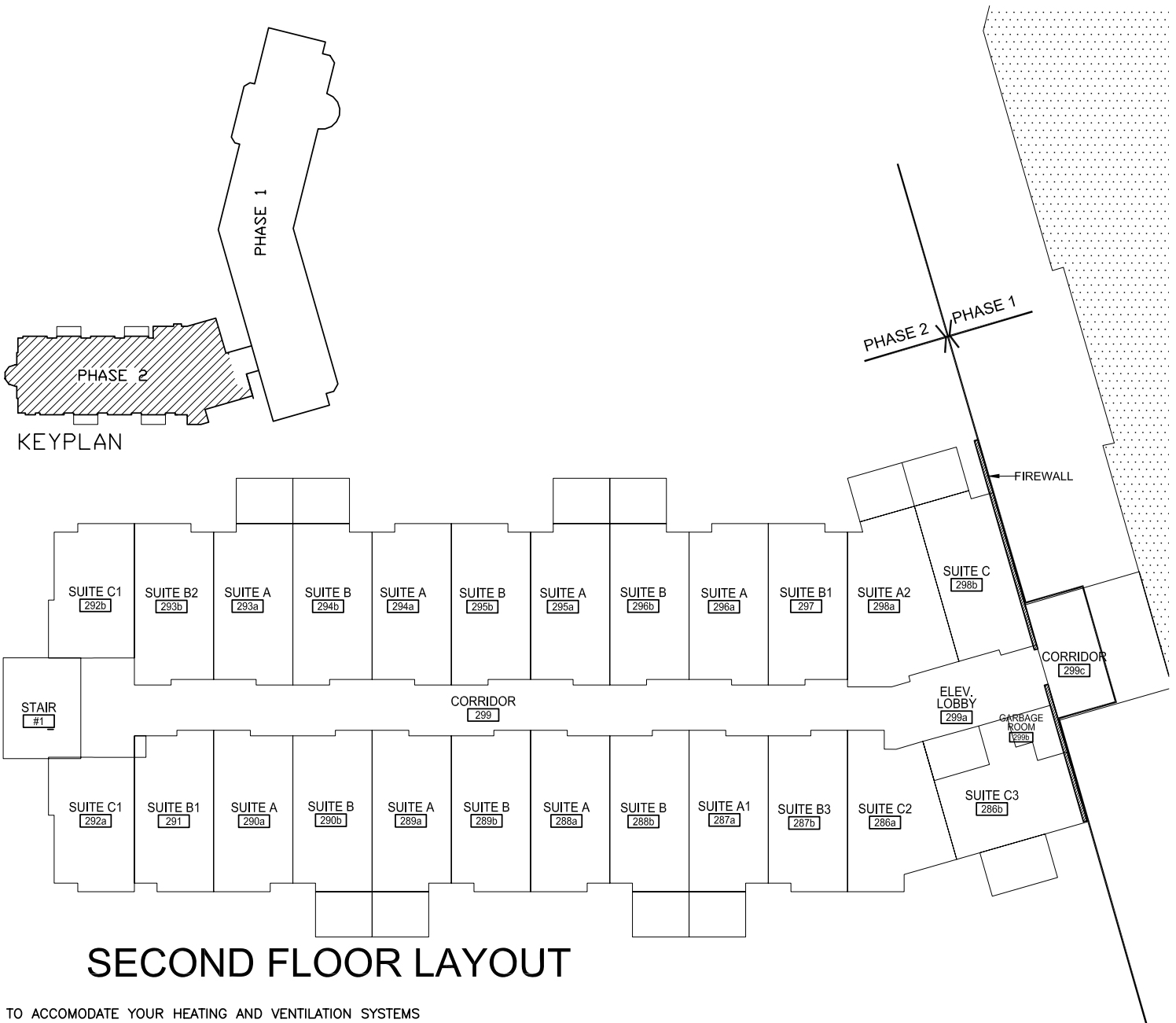
TO ACCOMMODATE YOUR HEATING AND VENTILATION SYSTEMS SOME VERTICAL SHAFTS AND SOME DROPPED CEILINGS MAY BE NECESSARY TO YOUR UNIT

DUE TO CHANGES AND IMPROVEMENTS RESULTING FROM CONTINUING RESEARCH AND DEVELOPING PROGRAMS, THE DEVELOPER/BUILDER RESERVES THE RIGHT TO ALTER THE DESIGN AND SPECIFICATIONS WITHOUT NOTICE OR OBLIGATIONS. ALL ILLUSTRATIONS ARE ARTIST'S CONCEPTS ONLY

SQUARE FOOTAGE SHOWN ON THE MARKETING PLANS REFLECTS THE APPLICABLE STRUCTURAL COMPONENTS.



The MANOR at ROYAL OAK Phase - 2



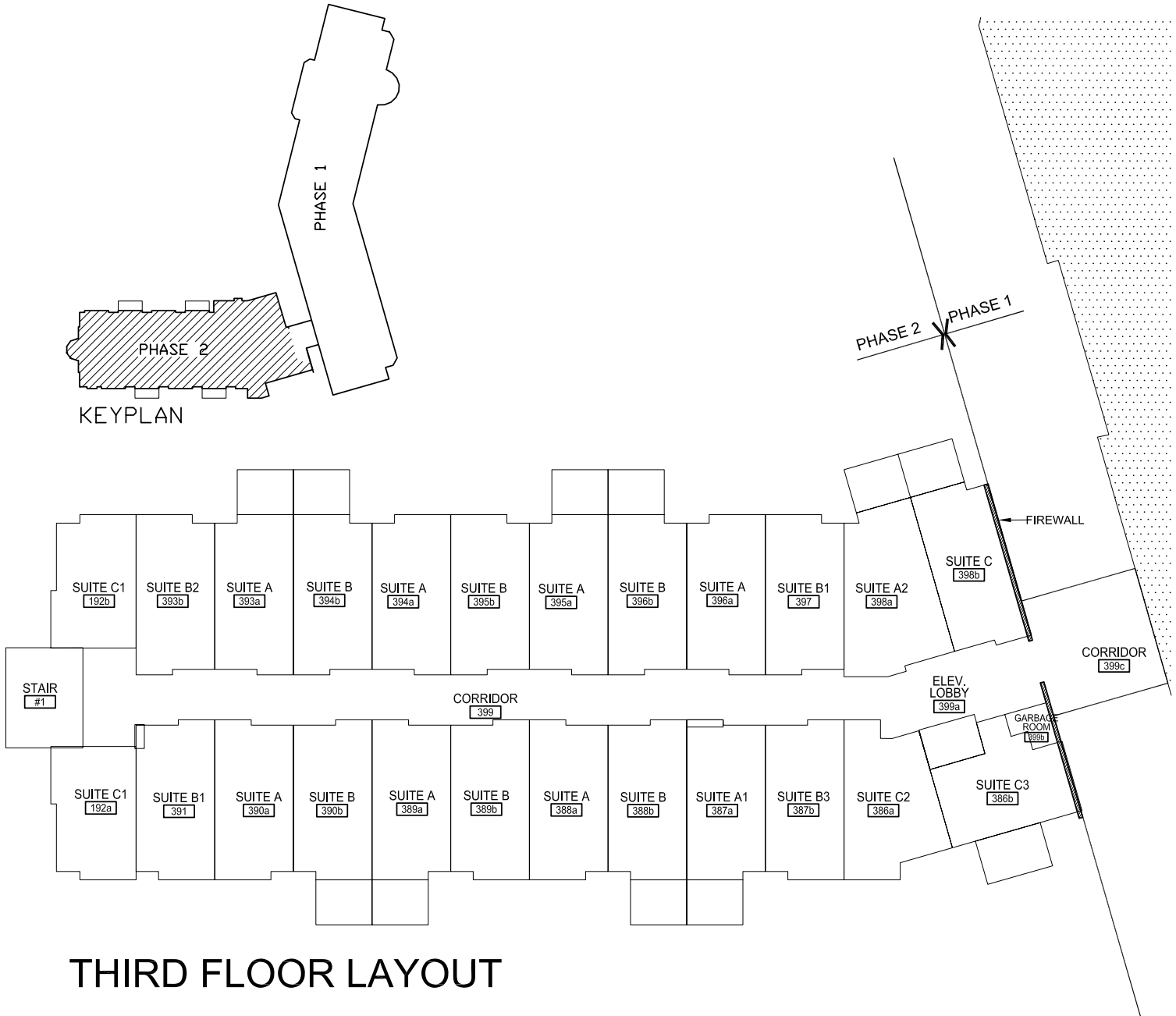
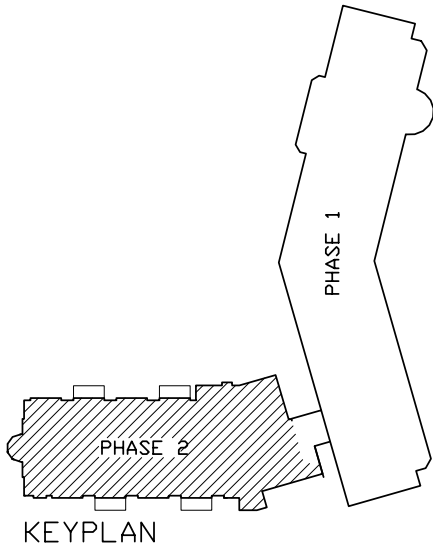
TO ACCOMMODATE YOUR HEATING AND VENTILATION SYSTEMS
SOME VERTICAL SHAFTS AND SOME DROPPED CEILINGS MAY BE
NECESSARY TO YOUR UNIT

DUE TO CHANGES AND IMPROVEMENTS RESULTING FROM
CONTINUING RESEARCH AND DEVELOPING PROGRAMS, THE
DEVELOPER/BUILDER RESERVES THE RIGHT TO ALTER THE
DESIGN AND SPECIFICATIONS WITHOUT NOTICE OR OBLIGATIONS.
ALL ILLUSTRATIONS ARE ARTIST'S CONCEPTS ONLY

SQUARE FOOTAGE SHOWN ON THE MARKETING PLANS
REFLECTS THE APPLICABLE STRUCTURAL COMPONENTS.



The MANOR at ROYAL OAK Phase - 2



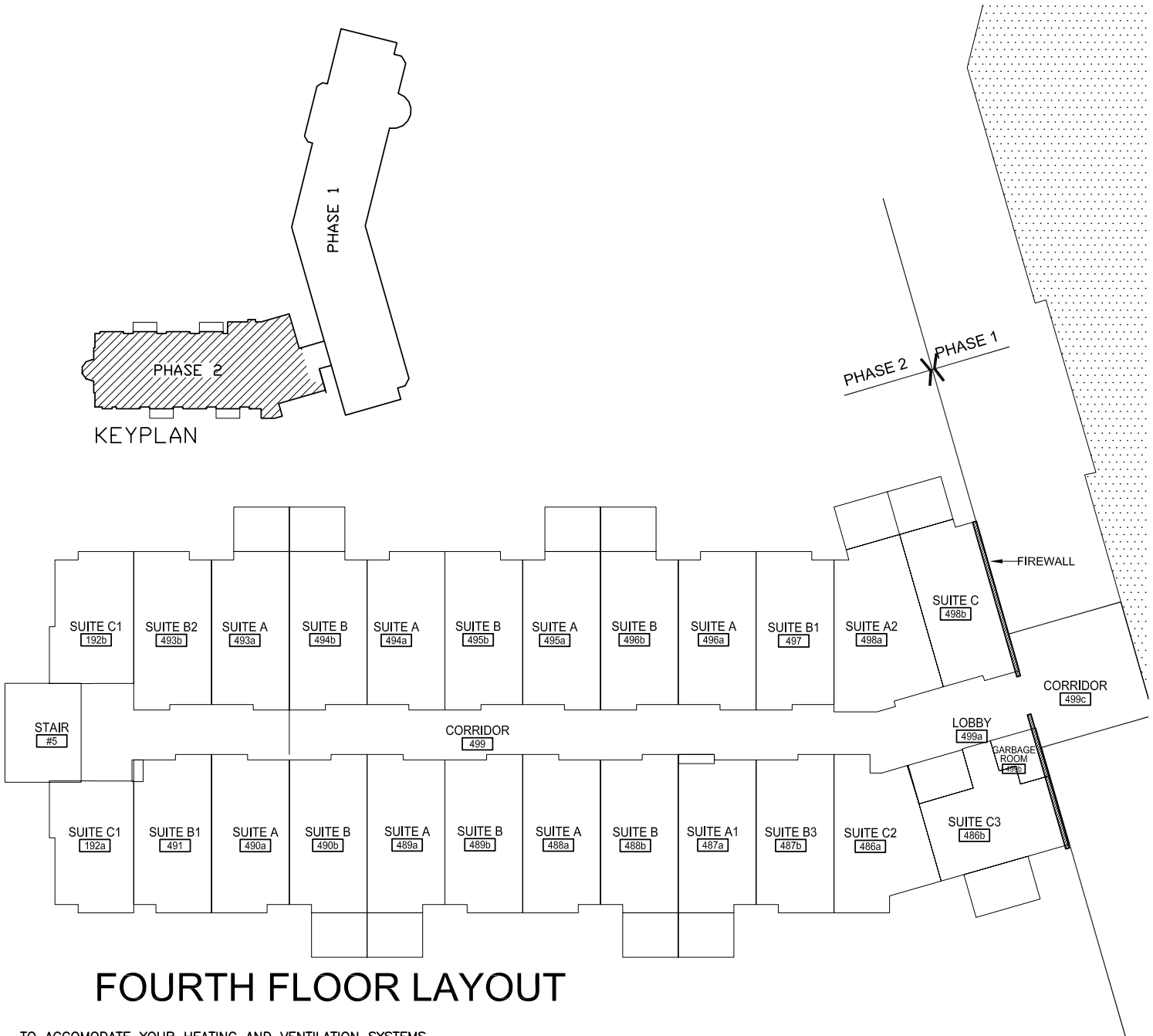
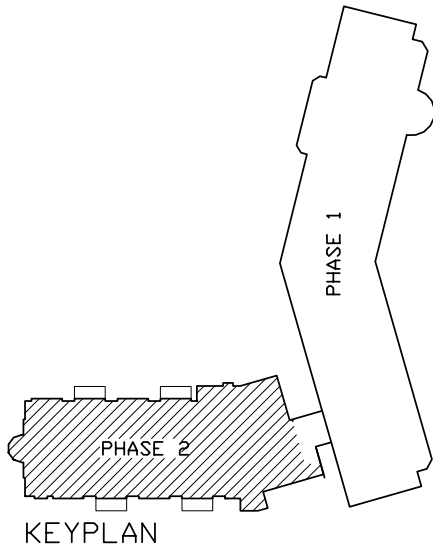
TO ACCOMODATE YOUR HEATING AND VENTILATION SYSTEMS
SOME VERTICAL SHAFTS AND SOME DROPPED CEILINGS MAY BE
NECESSARY TO YOUR UNIT

DUE TO CHANGES AND IMPROVEMENTS RESULTING FROM
CONTINUING RESEARCH AND DEVELOPING PROGRAMS, THE
DEVELOPER/BUILDER RESERVES THE RIGHT TO ALTER THE
DESIGN AND SPECIFICATIONS WITHOUT NOTICE OR OBLIGATIONS.
ALL ILLUSTRATIONS ARE ARTIST'S CONCEPTS ONLY

SQUARE FOOTAGE SHOWN ON THE MARKETING PLANS
REFLECTS THE APPLICABLE STRUCTURAL COMPONENTS.



The MANOR at ROYAL OAK Phase - 2



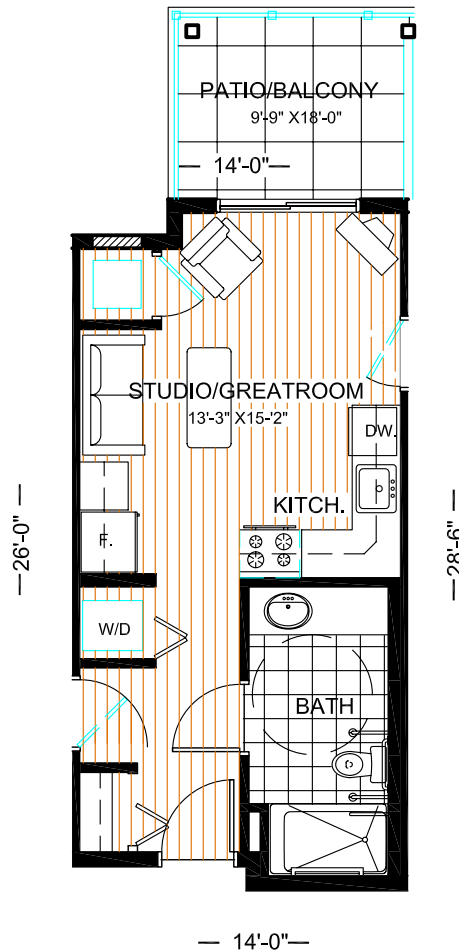
TO ACCOMMODATE YOUR HEATING AND VENTILATION SYSTEMS
SOME VERTICAL SHAFTS AND SOME DROPPED CEILINGS MAY BE
NECESSARY TO YOUR UNIT

DUE TO CHANGES AND IMPROVEMENTS RESULTING FROM
CONTINUING RESEARCH AND DEVELOPING PROGRAMS, THE
DEVELOPER/BUILDER RESERVES THE RIGHT TO ALTER THE
DESIGN AND SPECIFICATIONS WITHOUT NOTICE OR OBLIGATIONS.
ALL ILLUSTRATIONS ARE ARTIST'S CONCEPTS ONLY

SQUARE FOOTAGE SHOWN ON THE MARKETING PLANS
REFLECTS THE APPLICABLE STRUCTURAL COMPONENTS.



The MANOR at ROYAL OAK Phase - 2



Suite Type A

Suite Area = 385 Sq.Ft.
 Patio/Balcony = 80 Sq.Ft.
 Total Area = 465 Sq.Ft.

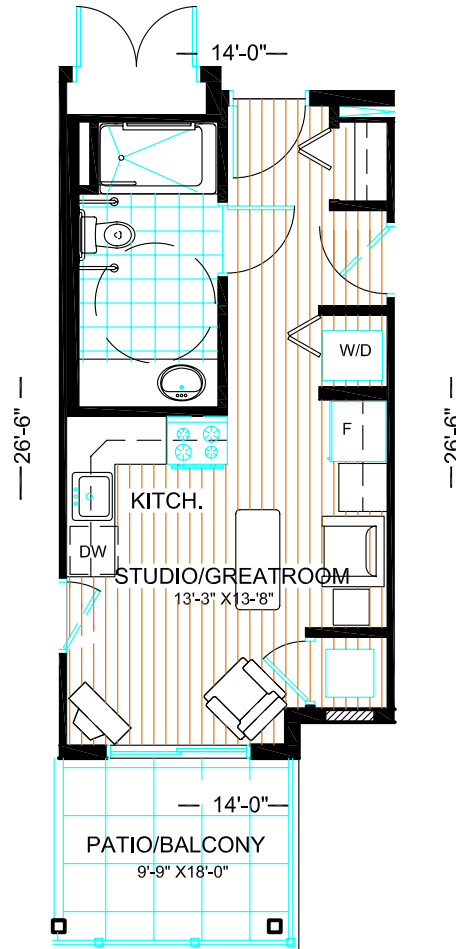
TO ACCOMMODATE YOUR HEATING AND VENTILATION SYSTEMS
 SOME VERTICAL SHAFTS AND SOME DROPPED CEILINGS MAY BE
 NECESSARY TO YOUR UNIT

DUE TO CHANGES AND IMPROVEMENTS RESULTING FROM
 CONTINUING RESEARCH AND DEVELOPING PROGRAMS, THE
 DEVELOPER/BUILDER RESERVES THE RIGHT TO ALTER THE
 DESIGN AND SPECIFICATIONS WITHOUT NOTICE OR OBLIGATIONS.
 ALL ILLUSTRATIONS ARE ARTIST'S CONCEPTS ONLY

SQUARE FOOTAGE SHOWN ON THE MARKETING PLANS
 REFLECTS THE APPLICABLE STRUCTURAL COMPONENTS.



The MANOR at ROYAL OAK Phase - 2



Unit Type A1

Unit Area = 375 Sq.Ft.
Patio/Balcony = 80 Sq.Ft.
Total Area = 455 Sq.Ft.

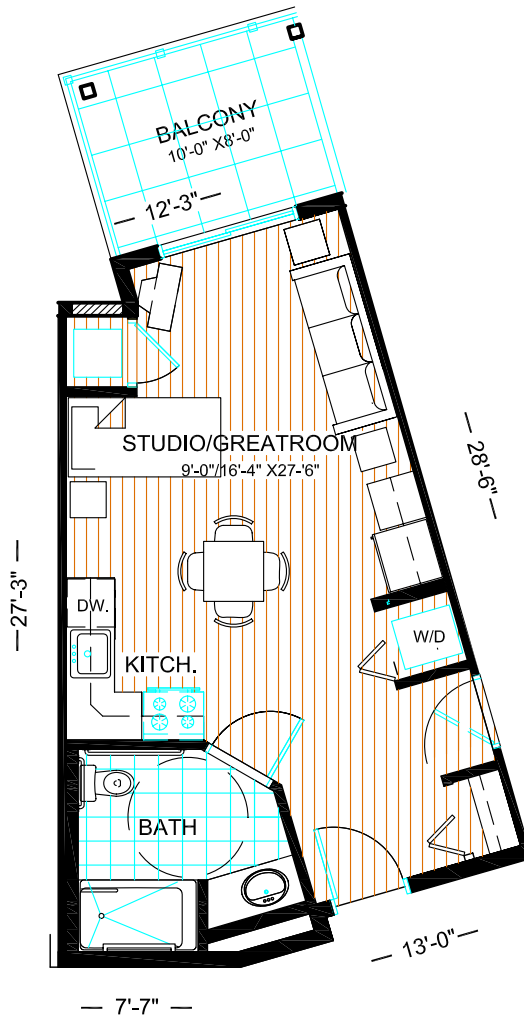
TO ACCOMMODATE YOUR HEATING AND VENTILATION SYSTEMS
SOME VERTICAL SHAFTS AND SOME DROPPED CEILINGS MAY BE
NECESSARY TO YOUR UNIT

DUE TO CHANGES AND IMPROVEMENTS RESULTING FROM
CONTINUING RESEARCH AND DEVELOPING PROGRAMS, THE
DEVELOPER/BUILDER RESERVES THE RIGHT TO ALTER THE
DESIGN AND SPECIFICATIONS WITHOUT NOTICE OR OBLIGATIONS.
ALL ILLUSTRATIONS ARE ARTIST'S CONCEPTS ONLY

SQUARE FOOTAGE SHOWN ON THE MARKETING PLANS
REFLECTS THE APPLICABLE STRUCTURAL COMPONENTS.



The MANOR at ROYAL OAK Phase - 2



Suite Type A2

Suite Area = 470 Sq.Ft.
Patio/Balcony = 80 Sq.Ft.
Total Area = 550 Sq.Ft.

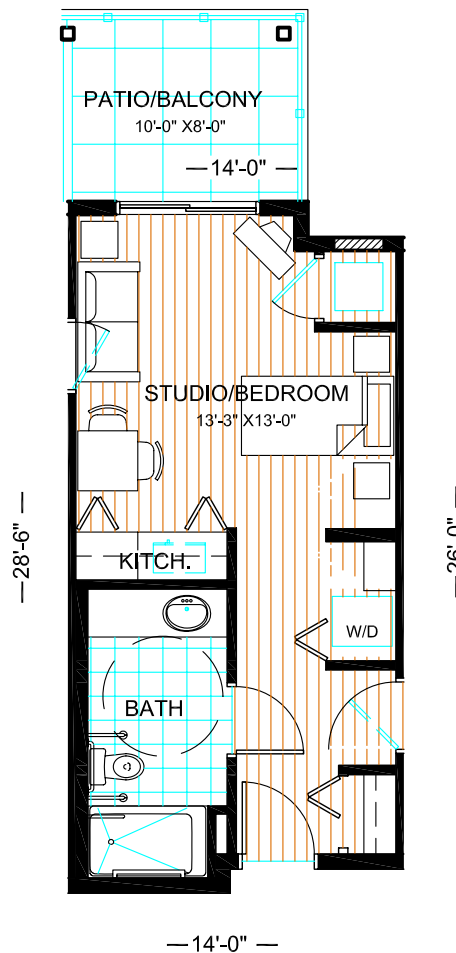
TO ACCOMMODATE YOUR HEATING AND VENTILATION SYSTEMS
SOME VERTICAL SHAFTS AND SOME DROPPED CEILINGS MAY BE
NECESSARY TO YOUR UNIT

DUE TO CHANGES AND IMPROVEMENTS RESULTING FROM
CONTINUING RESEARCH AND DEVELOPING PROGRAMS, THE
DEVELOPER/BUILDER RESERVES THE RIGHT TO ALTER THE
DESIGN AND SPECIFICATIONS WITHOUT NOTICE OR OBLIGATIONS.
ALL ILLUSTRATIONS ARE ARTIST'S CONCEPTS ONLY

SQUARE FOOTAGE SHOWN ON THE MARKETING PLANS
REFLECTS THE APPLICABLE STRUCTURAL COMPONENTS.



The MANOR at ROYAL OAK Phase - 2



Suite Type B

Suite Area = 385 Sq.Ft.
 Patio/Balcony = 80 Sq.Ft.
 Total Area = 465 Sq.Ft.

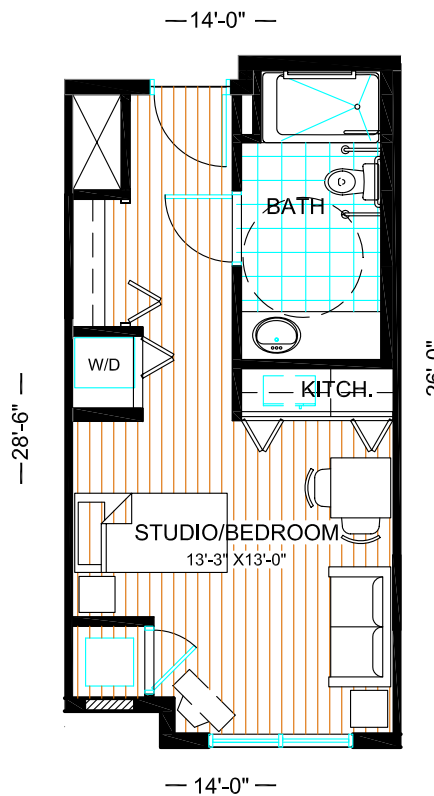
TO ACCOMMODATE YOUR HEATING AND VENTILATION SYSTEMS
 SOME VERTICAL SHAFTS AND SOME DROPPED CEILINGS MAY BE
 NECESSARY TO YOUR UNIT

DUE TO CHANGES AND IMPROVEMENTS RESULTING FROM
 CONTINUING RESEARCH AND DEVELOPING PROGRAMS, THE
 DEVELOPER/BUILDER RESERVES THE RIGHT TO ALTER THE
 DESIGN AND SPECIFICATIONS WITHOUT NOTICE OR OBLIGATIONS.
 ALL ILLUSTRATIONS ARE ARTIST'S CONCEPTS ONLY

SQUARE FOOTAGE SHOWN ON THE MARKETING PLANS
 REFLECTS THE APPLICABLE STRUCTURAL COMPONENTS.



The MANOR at ROYAL OAK Phase - 2



Suite Type B1

Suite Area = 375 Sq.Ft.
 Patio/Balcony = n.a. Sq.Ft.
 Total Area = 375 Sq.Ft.

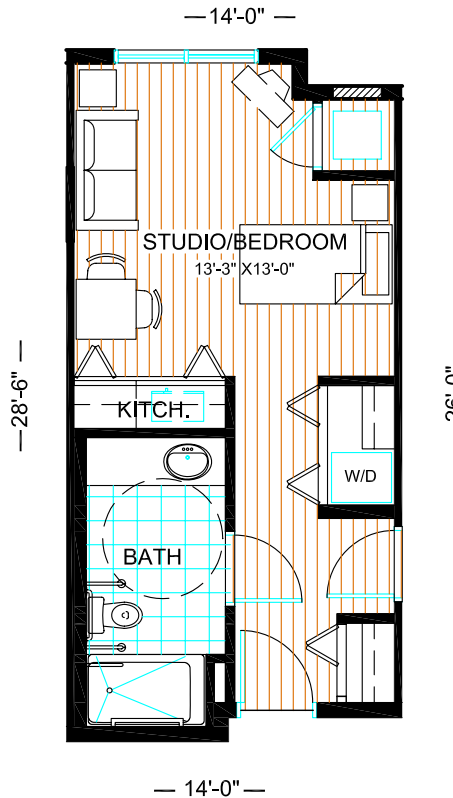
TO ACCOMMODATE YOUR HEATING AND VENTILATION SYSTEMS
 SOME VERTICAL SHAFTS AND SOME DROPPED CEILINGS MAY BE
 NECESSARY TO YOUR UNIT

DUE TO CHANGES AND IMPROVEMENTS RESULTING FROM
 CONTINUING RESEARCH AND DEVELOPING PROGRAMS, THE
 DEVELOPER/BUILDER RESERVES THE RIGHT TO ALTER THE
 DESIGN AND SPECIFICATIONS WITHOUT NOTICE OR OBLIGATIONS.
 ALL ILLUSTRATIONS ARE ARTIST'S CONCEPTS ONLY

SQUARE FOOTAGE SHOWN ON THE MARKETING PLANS
 REFLECTS THE APPLICABLE STRUCTURAL COMPONENTS.



The MANOR at ROYAL OAK Phase - 2



Suite Type B2

Suite Area = 385 Sq.Ft.
Patio/Balcony = n.a. Sq.Ft.
Total Area = 385 Sq.Ft.

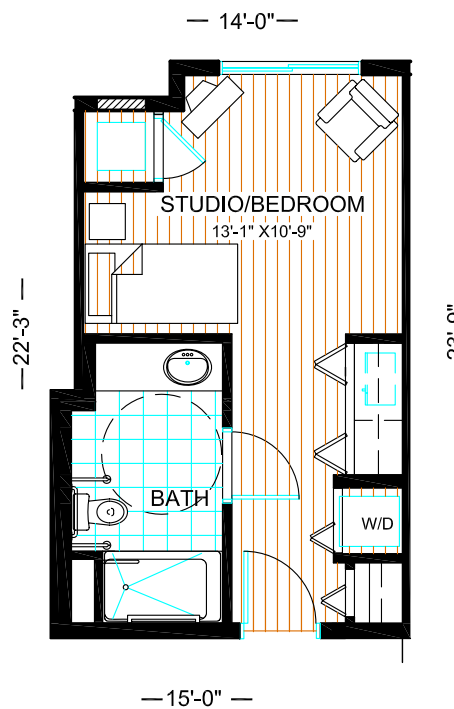
TO ACCOMMODATE YOUR HEATING AND VENTILATION SYSTEMS
SOME VERTICAL SHAFTS AND SOME DROPPED CEILINGS MAY BE
NECESSARY TO YOUR UNIT

DUE TO CHANGES AND IMPROVEMENTS RESULTING FROM
CONTINUING RESEARCH AND DEVELOPING PROGRAMS, THE
DEVELOPER/BUILDER RESERVES THE RIGHT TO ALTER THE
DESIGN AND SPECIFICATIONS WITHOUT NOTICE OR OBLIGATIONS.
ALL ILLUSTRATIONS ARE ARTIST'S CONCEPTS ONLY

SQUARE FOOTAGE SHOWN ON THE MARKETING PLANS
REFLECTS THE APPLICABLE STRUCTURAL COMPONENTS.



The MANOR at ROYAL OAK Phase - 2



Suite Type C1

Suite Area = 335 Sq.Ft.
Balcony Area = n.a. Sq.Ft.
Total Area = 335 Sq.Ft.

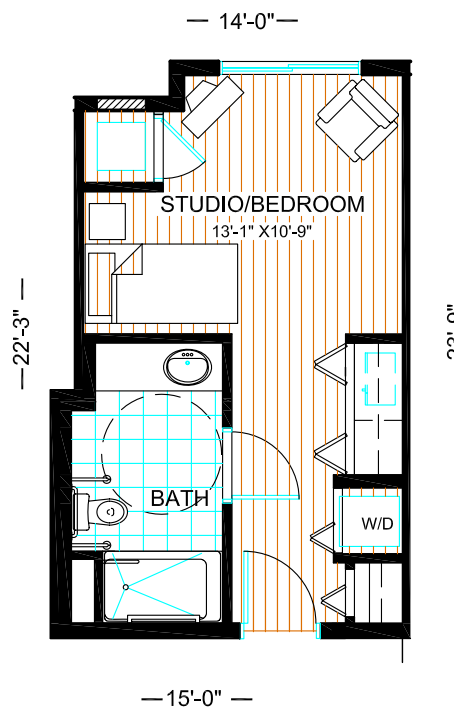
TO ACCOMODATE YOUR HEATING AND VENTILATION SYSTEMS
SOME VERTICAL SHAFTS AND SOME DROPPED CEILINGS MAY BE
NECESSARY TO YOUR UNIT

DUE TO CHANGES AND IMPROVEMENTS RESULTING FROM
CONTINUING RESEARCH AND DEVELOPING PROGRAMS, THE
DEVELOPER/BUILDER RESERVES THE RIGHT TO ALTER THE
DESIGN AND SPECIFICATIONS WITHOUT NOTICE OR OBLIGATIONS.
ALL ILLUSTRATIONS ARE ARTIST'S CONCEPTS ONLY

SQUARE FOOTAGE SHOWN ON THE MARKETING PLANS
REFLECTS THE APPLICABLE STRUCTURAL COMPONENTS.



The MANOR at ROYAL OAK Phase - 2



Suite Type C1

Suite Area = 335 Sq.Ft.
Balcony Area = n.a. Sq.Ft.
Total Area = 335 Sq.Ft.

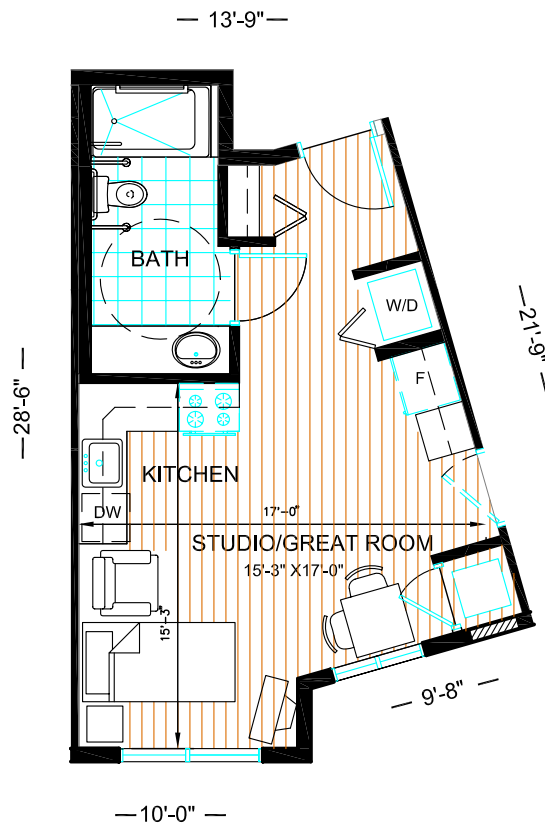
TO ACCOMMODATE YOUR HEATING AND VENTILATION SYSTEMS
SOME VERTICAL SHAFTS AND SOME DROPPED CEILINGS MAY BE
NECESSARY TO YOUR UNIT

DUE TO CHANGES AND IMPROVEMENTS RESULTING FROM
CONTINUING RESEARCH AND DEVELOPING PROGRAMS, THE
DEVELOPER/BUILDER RESERVES THE RIGHT TO ALTER THE
DESIGN AND SPECIFICATIONS WITHOUT NOTICE OR OBLIGATIONS.
ALL ILLUSTRATIONS ARE ARTIST'S CONCEPTS ONLY

SQUARE FOOTAGE SHOWN ON THE MARKETING PLANS
REFLECTS THE APPLICABLE STRUCTURAL COMPONENTS.



The MANOR at ROYAL OAK Phase - 2



Suite Type C2

Suite Area = 415 Sq.Ft.
Balcony Area = n.a. Sq.Ft.
Total Area = 415 Sq.Ft.

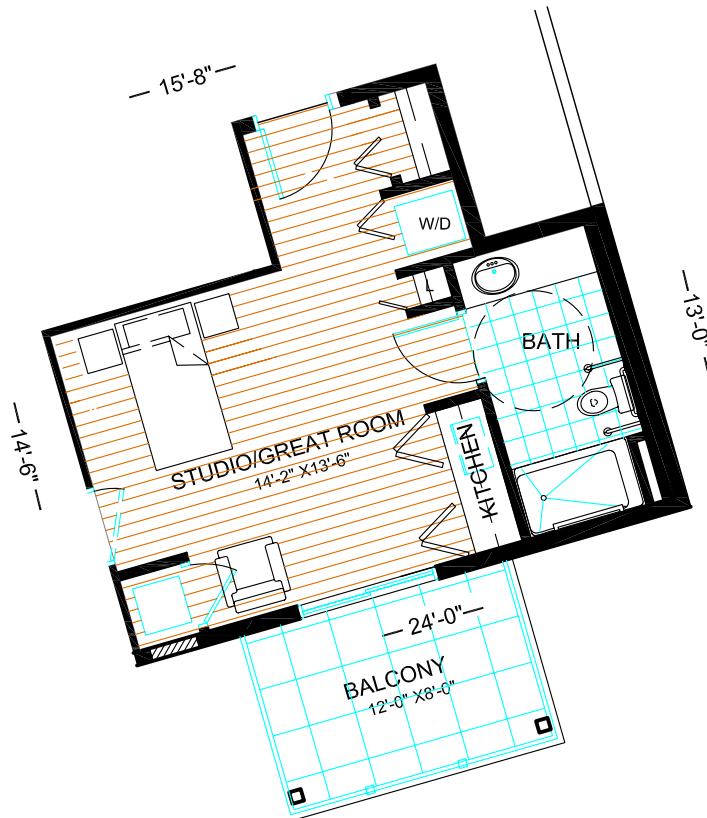
TO ACCOMODATE YOUR HEATING AND VENTILATION SYSTEMS
SOME VERTICAL SHAFTS AND SOME DROPPED CEILINGS MAY BE
NECESSARY TO YOUR UNIT

DUE TO CHANGES AND IMPROVEMENTS RESULTING FROM
CONTINUING RESEARCH AND DEVELOPING PROGRAMS, THE
DEVELOPER/BUILDER RESERVES THE RIGHT TO ALTER THE
DESIGN AND SPECIFICATIONS WITHOUT NOTICE OR OBLIGATIONS.
ALL ILLUSTRATIONS ARE ARTIST'S CONCEPTS ONLY

SQUARE FOOTAGE SHOWN ON THE MARKETING PLANS
REFLECTS THE APPLICABLE STRUCTURAL COMPONENTS.



The MANOR at ROYAL OAK Phase - 2



Suite Type C3

Suite Area = 390 Sq.Ft.

Balcony Area = 95 Sq.Ft.

Total Area = 485 Sq.Ft.

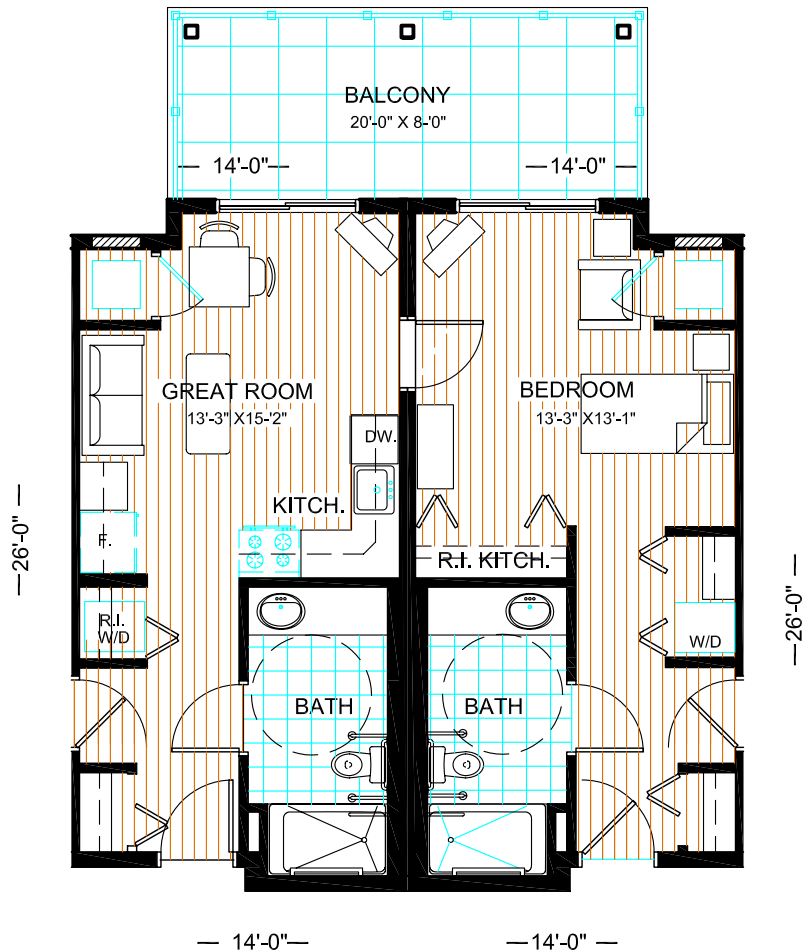
TO ACCOMMODATE YOUR HEATING AND VENTILATION SYSTEMS
SOME VERTICAL SHAFTS AND SOME DROPPED CEILINGS MAY BE
NECESSARY TO YOUR UNIT

DUE TO CHANGES AND IMPROVEMENTS RESULTING FROM
CONTINUING RESEARCH AND DEVELOPING PROGRAMS, THE
DEVELOPER/BUILDER RESERVES THE RIGHT TO ALTER THE
DESIGN AND SPECIFICATIONS WITHOUT NOTICE OR OBLIGATIONS.
ALL ILLUSTRATIONS ARE ARTIST'S CONCEPTS ONLY

SQUARE FOOTAGE SHOWN ON THE MARKETING PLANS
REFLECTS THE APPLICABLE STRUCTURAL COMPONENTS.



The MANOR at ROYAL OAK Phase - 2



Unit Type A-B

Unit Area = 770 Sq.Ft.
 Balcony Area = 160 Sq.Ft.
 Total Area = 930 Sq.Ft.

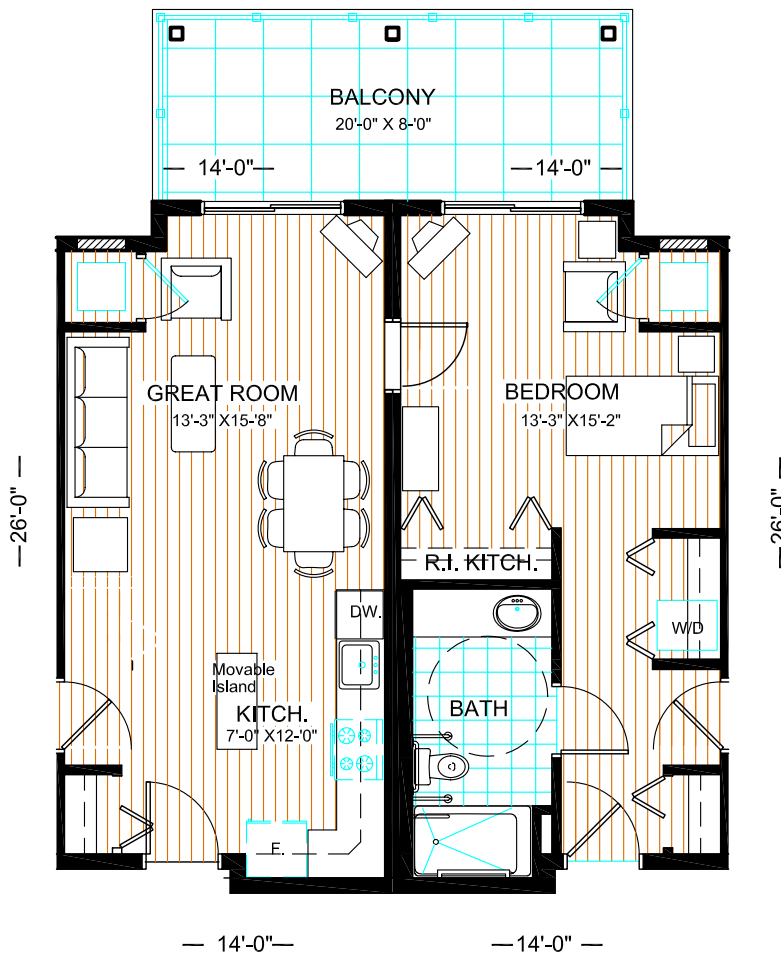
TO ACCOMMODATE YOUR HEATING AND VENTILATION SYSTEMS
 SOME VERTICAL SHAFTS AND SOME DROPPED CEILINGS MAY BE
 NECESSARY TO YOUR UNIT

DUE TO CHANGES AND IMPROVEMENTS RESULTING FROM
 CONTINUING RESEARCH AND DEVELOPING PROGRAMS, THE
 DEVELOPER/BUILDER RESERVES THE RIGHT TO ALTER THE
 DESIGN AND SPECIFICATIONS WITHOUT NOTICE OR OBLIGATIONS.
 ALL ILLUSTRATIONS ARE ARTIST'S CONCEPTS ONLY

SQUARE FOOTAGE SHOWN ON THE MARKETING PLANS
 REFLECTS THE APPLICABLE STRUCTURAL COMPONENTS.



The MANOR at ROYAL OAK Phase - 2



Unit Type A-B option

Unit Area = 770 Sq.Ft.
Balcony Area = 160 Sq.Ft.
Total Area = 930 Sq.Ft.

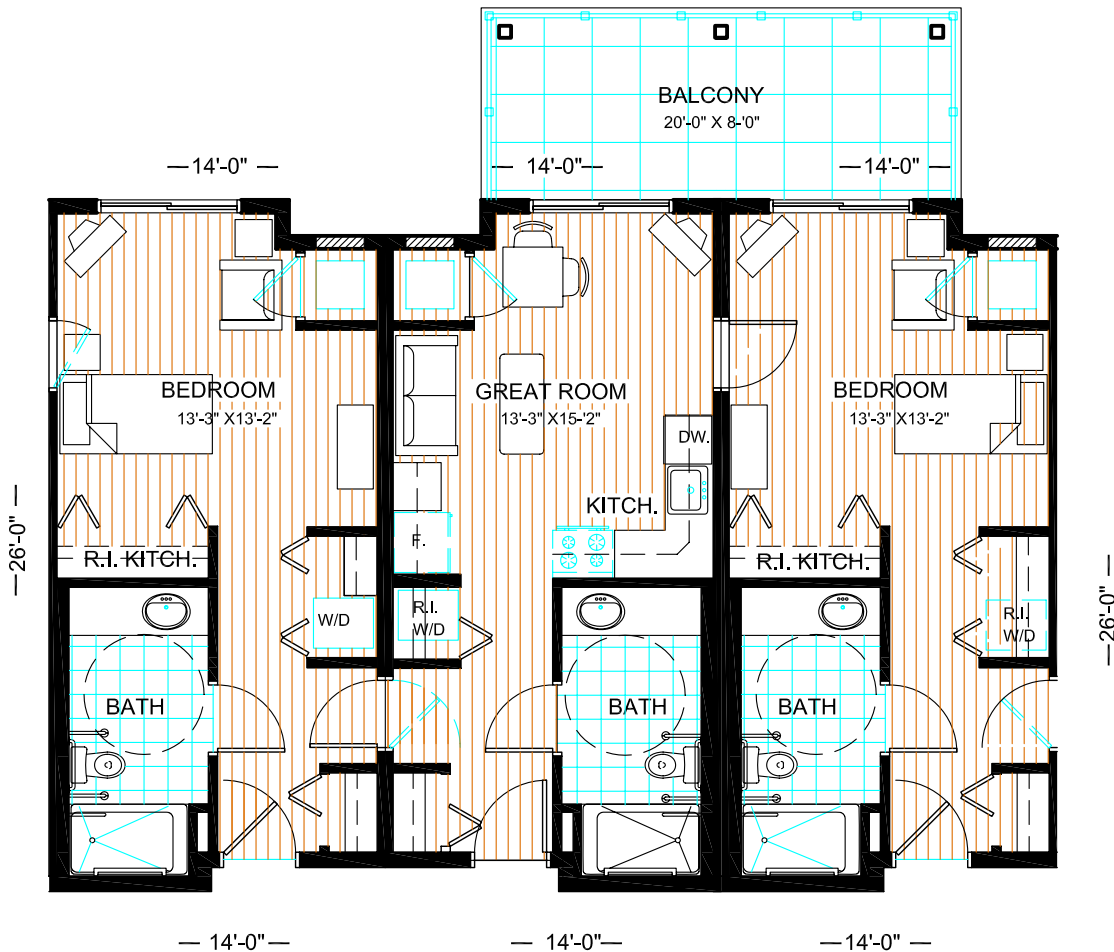
TO ACCOMMODATE YOUR HEATING AND VENTILATION SYSTEMS
SOME VERTICAL SHAFTS AND SOME DROPPED CEILINGS MAY BE
NECESSARY TO YOUR UNIT

DUE TO CHANGES AND IMPROVEMENTS RESULTING FROM
CONTINUING RESEARCH AND DEVELOPING PROGRAMS, THE
DEVELOPER/BUILDER RESERVES THE RIGHT TO ALTER THE
DESIGN AND SPECIFICATIONS WITHOUT NOTICE OR OBLIGATIONS.
ALL ILLUSTRATIONS ARE ARTIST'S CONCEPTS ONLY

SQUARE FOOTAGE SHOWN ON THE MARKETING PLANS
REFLECTS THE APPLICABLE STRUCTURAL COMPONENTS.



The MANOR at ROYAL OAK Phase - 2



Unit Type B-A-B

Unit Area = 1,155 Sq.Ft.

Balcony Area = 160 Sq.Ft.

Total Area = 1,315 Sq.Ft.

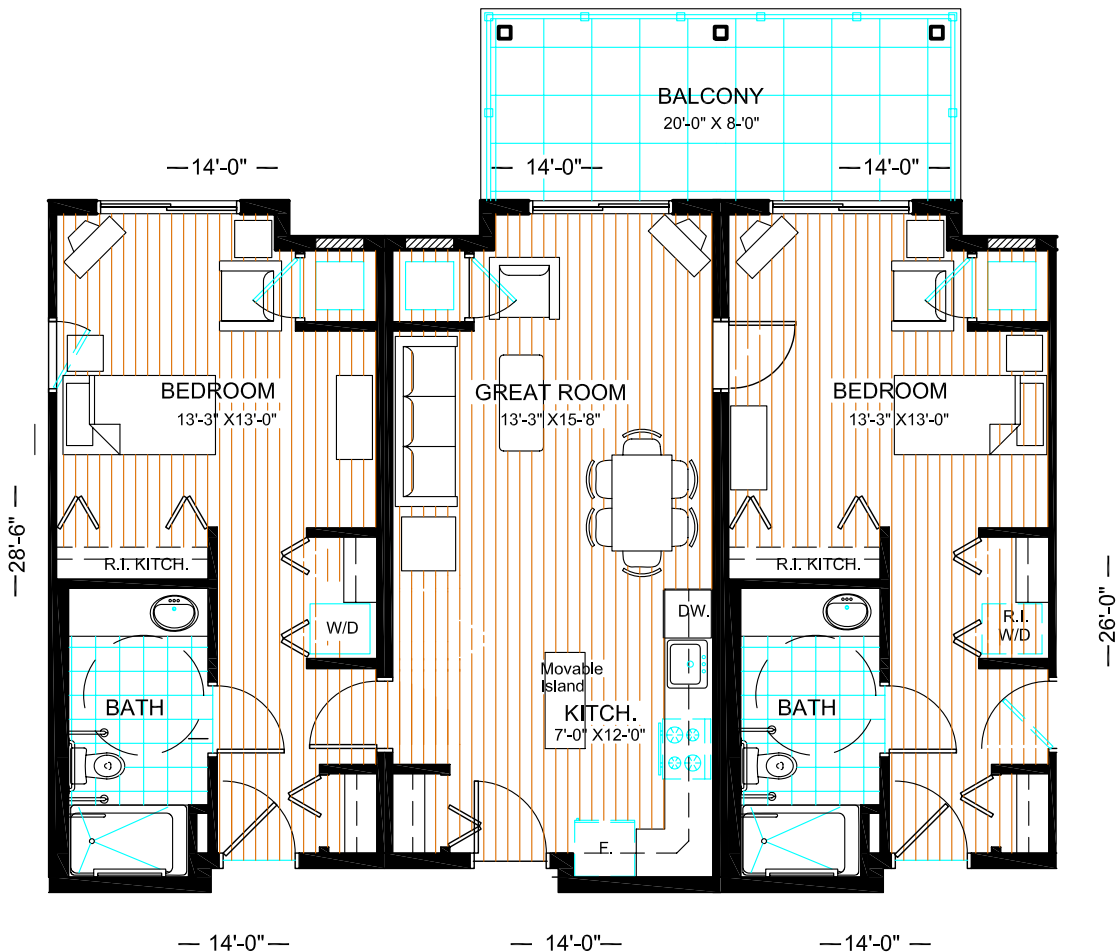
TO ACCOMMODATE YOUR HEATING AND VENTILATION SYSTEMS
SOME VERTICAL SHAFTS AND SOME DROPPED CEILINGS MAY BE
NECESSARY TO YOUR UNIT

DUE TO CHANGES AND IMPROVEMENTS RESULTING FROM
CONTINUING RESEARCH AND DEVELOPING PROGRAMS, THE
DEVELOPER/BUILDER RESERVES THE RIGHT TO ALTER THE
DESIGN AND SPECIFICATIONS WITHOUT NOTICE OR OBLIGATIONS.
ALL ILLUSTRATIONS ARE ARTIST'S CONCEPTS ONLY

SQUARE FOOTAGE SHOWN ON THE MARKETING PLANS
REFLECTS THE APPLICABLE STRUCTURAL COMPONENTS.



The MANOR at ROYAL OAK Phase - 2



Unit Type B-A-B option

Unit Area = 1,155 Sq.Ft.
Balcony Area = 160 Sq.Ft.
Total Area = 1,315 Sq.Ft.

TO ACCOMMODATE YOUR HEATING AND VENTILATION SYSTEMS
SOME VERTICAL SHAFTS AND SOME DROPPED CEILINGS MAY BE
NECESSARY TO YOUR UNIT

DUE TO CHANGES AND IMPROVEMENTS RESULTING FROM
CONTINUING RESEARCH AND DEVELOPING PROGRAMS, THE
DEVELOPER/BUILDER RESERVES THE RIGHT TO ALTER THE
DESIGN AND SPECIFICATIONS WITHOUT NOTICE OR OBLIGATIONS.
ALL ILLUSTRATIONS ARE ARTIST'S CONCEPTS ONLY

SQUARE FOOTAGE SHOWN ON THE MARKETING PLANS
REFLECTS THE APPLICABLE STRUCTURAL COMPONENTS.

